



# AL AMANAH COLLEGE

Success Through Knowledge

## NEWSLETTER

Issue 01

Friday 2 March 2018

## Message from the Principal's Office

Dear parents, students, staff and community of Al Amanah;

All praise and thanks are due to our Exalted God "Allah", the Lord of the worlds. I ask Allah to enlighten our hearts with the knowledge of Holy Qura'n and endow upon us wisdom and kind exhortation. May Allah raise the rank of Prophet Muhammad, and protect His nation from that which He fears for them.

Welcome back to a new exciting year of learning in 2018. It is a great pleasure to extend a special welcome to our new families who joined us for the first time in 2018 and I appreciate the decision they made to entrust much of the responsibility for their child's education to the dedicated and devoted staff at Al Amanah College and I hope that your time with us is beneficial and vitalizing

I would like also to welcome our staff who have returned from the long holiday break with full energy and enthusiasm for the new school year. Also, a particular welcome to the new two teachers Mrs. Achi and Mrs. Libdy who keenly and actively joined our teaching staff.

The commencement to the school year has been sensational and spectacular. Our students have settled in well and they are working now with their caring and devoted teachers to develop and enhance their learning skills.

Again, we emphasise on the partnership between school and home since we consider it as vital in the learning journey of each child and it will strengthen the communication between students,

- The current email address so that we can send you the school newsletter or the like.
- Inform the administration office in writing whenever your child is absent.
- Inform the admin and the class teacher if there are any changes to your child's medical condition.
- Update your contact phone numbers, address and employment details if there are any changes.
- Approach our teachers, coordinator and principal if you have any concerns about your child.

Another very important and urgent reminder to all parents and carers is to use all precautions about the safety of students and comply with the following:

- Reduce speed limit to avoid any tragedy.
- Drop off your children and move immediately to diminish the traffic congestion in the parking area.
- Do not go to the assembly area or wait in the playground area to give other parents a chance to drop off their children in the parking area.
- Only parents of Kindergarten students can come inside the assembly area during Term 1.
- All parents are requested not to leave their children unattended in the car.

**All the very best wishes**  
Bassam Adra

### Dates to Remember

#### Tuesday 6 March

Kindy Calmsley Farm Excursion  
Yr 2 Telstra Museum Excursion

#### Monday 5 March - Wednesday 7

#### March

NAPLAN Trials

#### Thursday 8 March

SRC Induction

#### Tuesday 13 March

Athletics Carnival

#### Thursday 15 March

SRC Breakfast

#### Saturday 17 March

NAPLAN Prep 1

#### Tuesday 20 March

Yr 1 Travel Bugs Incursion

#### Wednesday 21 March

Harmony Day

#### Friday 30 March

Public Holiday

#### Monday 2 April

Public Holiday

## REMINDERS

### 2018 CLASSES AND TEACHERS

Currently we have 11 classes this year at Al Amanah Bankstown, the classes and teachers are as follows:

- KA - Mrs Miriam Awada
- KD - Mrs Dahlia Achi
- 1C - Ms Suemaya Chami
- 1J - Mrs Lara Jazzar
- 2D - Miss Sajea Baburi
- 2L - Miss Pakiza Lalee
- 3L - Ms Robyn Libdy
- 3M - Mrs Dania Moksasi
- 4O - Mrs Mirna Oueik
- 5Z - Miss Eman Zahra
- 6S - Mr Eirwan Sinwan

### DROPPING STUDENTS OFF BEFORE 8:00

A number of our parents and caregivers are dropping their children at school before 8:00am. This is a safety concern for your child as there is **NO TEACHER SUPERVISION BEFORE 8:00 am**. In the interest of student safety, Mr Adra will be contacting parents and caregivers who continue to drop their children off before 8:00am.

### SPORTS CARNIVAL

Al Amanah College Bankstown Athletics Carnival will be held on **Tuesday 13 March 2018**. The carnival will take place at "The Crest Facility" which is located at Carysfield Rd, Bass Hill. All Students are to attend the Sports Carnival. Students must be dropped off at the oval by 8:30 am and must be picked up at 1:30 pm.

### LATE ARRIVALS

Students who arrive at school after 8:40 am must go to the office and collect a late note. Please do not accompany your child to their classroom if they arrive late as this tends to unsettle the classes and interrupt valuable learning time. Students should proceed to class themselves (students requiring assistance to their classrooms will be assisted by our office staff).

### SCHOOL UNIFORM

As part of school policies, students are required to attend school with correct school uniform and proper haircuts. Teachers will be checking students uniform every morning. Students found wearing incorrect uniform or having inappropriate haircuts will be sent to the office and parents will be contacted and asked to either bring the correct uniform or take the student home.

### STUDENT ATTENDANCE

School hours are from 8:20 am-3:30 pm. All students must be at school at 8:20 am in order for them to participate in the morning supplication and assembly. Lessons begin at 8:30am. Student who arrive after roll call ends will need to obtain a late note from the office. These students will miss out on class time and this will affect their overall learning. It is also disruptive for the students who are punctual. We ask for your cooperation to ensure your child arrives on time in order to maximise their learning.

### ARE YOUR DETAILS UP TO DATE

Please ensure you advise the school office if there is any change in your contact details (ie: address, mobile or home phone, email, emergency contacts). Often we are unable to contact parents due to not having the most up-to-date contact information.

### NUT AWARE SCHOOL

We strive to be a "Nut-Aware" environment in order to minimise risks to students. Staff members are trained to administer assistance when allergic reaction occurs. For some children even the smallest trace of nut product can result in an allergic reaction. Please be careful with the food you send with your child/ren to school.



## MEET THE TEACHER MORNING

Kindergarten and Year 1 teachers opened their classrooms early on in the school year. On this day, parents came to the school, touring the classrooms, and meeting their child's teachers. Important classroom procedures were discussed as well as tips on how to help children at home. We thank all families that attended and look forward to an eventful learning year ahead.



## MATHLETICS

Truly captivating a student comes from providing a powerful, engaging and personal learning experience. This is one of the keys to a love of learning. Mathletics makes valuable educational content engaging, so students feel like they're playing maths games while gaining valuable practice.

Mathletics is built on a foundation of solid curriculum-led content, designed by educators. It has hundreds of hours of activities, tutorials and curriculum content to support the needs of your child.

Your child's classroom teacher chooses the content that lines up with the classroom program and sets activities which further your child's learning. Early this term each child was sent a letter explaining to parents a little about Mathletics and how it works along with each child's individual login details. Please make sure your child is logging in regularly and completing some of the set engaging activities.

## KINDY FIRST DAY

On Thursday 1 February, 45 students gathered eagerly in the assembly area. Mrs Jalloul called the roll and the students lined up with their classroom teacher. After an individual photograph the students walked off bravely into their classrooms.

Once inside the classroom the students were introduced to their teachers Mrs Achi and Mrs Awada. After a detailed discussion about feelings and the process of coming to school, the students were given the chance to complete fun activities to help them ease into the school day.

Later in the day, the students enjoyed lunch and a play in the kindergarten area and then it was time to go home. It was a fantastic and productive day for all students!



# KINDY 2018

## NAPLAN INFORMATION

### **NAPLAN on paper – information for parents and carers**

#### **Why do students do NAPLAN tests?**

The National Assessment Program – Literacy and Numeracy (NAPLAN) assesses literacy and numeracy skills that are essential for every child to progress through school and life.

Students in Years 3, 5, 7 and 9 participate in the annual NAPLAN tests in reading, writing, language conventions (spelling, grammar and punctuation) and numeracy.

The tests provide parents and schools with an understanding of how individual students are performing at the time of the tests. NAPLAN tests are

just one aspect of a school's assessment and reporting

process; they do not replace ongoing assessments made by teachers about student performance.

NAPLAN tests also provide schools, education authorities and governments with information about how education programs are working and whether young Australians are meeting important educational outcomes in literacy and numeracy.

#### **What will be tested?**

NAPLAN assesses literacy and numeracy skills that students are learning through their regular school curriculum. All government and non-government education authorities have contributed to the development of NAPLAN materials.

To give you an idea of what the tests look like, see example questions at [nap.edu.au/naplanexample](http://nap.edu.au/naplanexample)

#### **How can I help my child prepare for NAPLAN?**

Help your child prepare for NAPLAN by reassuring them that the tests are just one part of their school program, and by reminding them on the day to simply try their best. Teachers will ensure students are familiar with the types of questions in the tests and will provide appropriate support and guidance.

ACARA does not recommend the use of services by coaching providers or excessive preparation. NAPLAN is not about passing or failing, but about assessing learning progress.

#### **Participation in NAPLAN**

All students in Years 3, 5, 7 and 9 are expected to participate in the annual NAPLAN tests.

Students with disability may qualify for adjustments

that reflect the support normally provided for classroom

assessments. A formal exemption may be granted for

a student with significant intellectual disability and/or significant coexisting conditions, or for a student who has recently arrived in Australia and has a non-English speaking background.

Your school principal and your local test administration authority can give you more information on special provisions or the process required to gain a formal exemption.

#### **Will my child sit NAPLAN on paper or online?**

Your child will sit the NAPLAN paper tests in 2018. However, children in some other schools across Australia may sit the NAPLAN online tests this year. Federal, state and territory education ministers have agreed that NAPLAN will move online over the next two to three years. State and territory education authorities will determine when their schools move online. As students are presented with questions that test the same range of difficulty, regardless of whether they complete the test online or on paper, results for both formats will be reported on the same NAPLAN assessment scale.

To find out more about NAPLAN Online, visit [nap.edu.au/online-assessment](http://nap.edu.au/online-assessment)

## what if my child is absent from school on test days?

Where possible, schools may arrange for individual students who are absent at the time of testing to complete missed tests at another time during the testing week. Individual students are not permitted to sit tests after Friday 18 May 2018.

## NAPLAN 2018 tests timetable

|        | <b>Tuesday 15 May</b>  | <b>Wednesday 16 May</b> | <b>Thursday 17 May</b> |
|--------|--|-------------------------|------------------------|
| Year 3 | Language conventions<br>40 minutes<br>.....<br>Writing<br>40 Minutes | Reading<br>45 minutes   | Numeracy<br>45 minutes |
| Year 5 | Language conventions<br>40 minutes<br>.....<br>Writing<br>40 Minutes | Reading<br>50 minutes   | Numeracy<br>50 minutes |
| Year 7 | Language conventions<br>45 minutes<br>.....<br>Writing<br>40 Minutes | Reading<br>65 minutes   | Numeracy<br>60 minutes |
| Year 9 | Language conventions<br>45 minutes<br>.....<br>Writing<br>40 Minutes | Reading<br>65 minutes   | Numeracy<br>60 minutes |

## How is my child's performance measured?

Individual student performance is shown on a national achievement scale for each test. A result at the national minimum standard indicates that the student has demonstrated the basic literacy and numeracy skills needed to participate fully in that year level. The performance of individual students can be compared to the average performance of all students in Australia. A NAPLAN report will be issued by your school later in the year. If you do not receive a report, you should contact your school.

## How are NAPLAN test results used?

Students and parents may use individual results to discuss progress with teachers.

Teachers use results to help them better identify students who require greater challenges or additional support.

Schools use results to identify strengths and weaknesses in teaching programs and to set goals in literacy and numeracy.

School systems use results to review programs and support offered to schools.

The community can see average school NAPLAN results at [myschool.edu.au](http://myschool.edu.au)

## Where can I get more information

For more information about NAPLAN:

contact your child's school

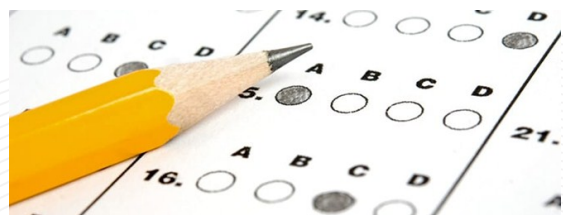
contact your local test administration authority at

[nap.edu.au/TAA](http://nap.edu.au/TAA)

visit [nap.edu.au](http://nap.edu.au)

For information about how personal information for NAPLAN will be handled by ACARA, please visit

[nap.edu.au/naplanprivacy](http://nap.edu.au/naplanprivacy)



## COMMUNITY SERVICE AWARD



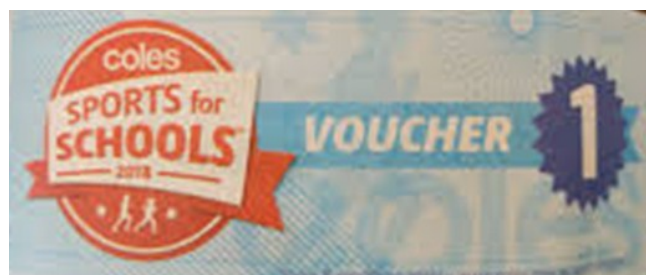
Congratulations to Zara Jalloul for receiving the 2017 Community Service Award. Well Done..

## SPORTS FOR SCHOOLS-COLES

Al Amanah College will be participating in the Sports for School program this year to encourage students to stay fit and healthy.

How it works?

When you shop at Coles, you'll receive Sports for Schools vouchers which will need to be handed in to the office. The more vouchers you collect and bring in, the more sports gear our school will receive. Start collecting today because the race is on!



Nutrition Snippet

### The simplest way

...to get the kids eating more fruit and veg!

Want to learn how to create easy, budget-friendly family meals, entice fussy eaters and eat well to prevent cancer?



Register for a FREE Fruit & Veg Sense workshop to get simple tips and ideas on:

- saving money by eating more fruit and veg;
- changing family favourites into healthy meals; and
- learning clever ways to entice fussy eaters.

All participants receive a FREE recipe book.

We have proven results that this workshop helps parents to eat more fruit and veg. And if you eat more fruit and veg, your children will too!

For more information visit [www.eatittobeatit.com.au](http://www.eatittobeatit.com.au) or join us at [facebook.com/eatittobeatit](https://www.facebook.com/eatittobeatit)



### SCHOOL ZONE OFFENCES WHAT ARE YOU RISKING?\*

|   |   |
|---|---|
| <p><b>FACT</b> Children are small, harder to see, behave unpredictably and are extremely vulnerable. They need YOU to take extra care when driving and parking around school zones.</p> |   |
| <p><b>No Parking</b><br/>You have 2 minutes to drop-off or pick-up and must stay within 3 metres of your vehicle.</p>   | <p><b>PENALTY \$183</b><br/>+ 3 DEMERIT POINTS</p>          |
| <p><b>No Stopping</b><br/>You are not permitted to stop on a length of road with a no stopping sign.</p>  | <p><b>PENALTY \$330</b><br/>+ 3 DEMERIT POINTS</p>          |
| <p><b>Bus Zone</b><br/>You must not stop your vehicle in a Bus Zone unless you are driving a public bus.</p>  | <p><b>PENALTY \$330</b><br/>+ 3 DEMERIT POINTS</p>          |
| <p><b>Mobile Phone Use</b><br/>Do not use a hand held mobile phone while driving.</p>   | <p><b>PENALTY \$439</b><br/>+ 4 DEMERIT POINTS</p>          |
| <p><b>School Zone Speeding Offences</b><br/>40km/h is the speed limit. Children are vulnerable in school zones.</p>   | <p><b>MAXIMUM PENALTY \$3740</b><br/>+ 3 DEMERIT POINTS</p> |
| <p><b>Pedestrian Crossings</b><br/>Do not stop on or across a driveway.</p>   | <p><b>PENALTY \$439</b><br/>+ 3 DEMERIT POINTS</p>          |
| <p><b>Driveways</b><br/>Do not stop on or across a driveway.</p>  | <p><b>PENALTY \$330</b><br/>+ 3 DEMERIT POINTS</p>          |
| <p><b>Intersections</b><br/>Do not stop on or within 20 metres of an intersection.</p>  | <p><b>PENALTY \$439</b><br/>+ 3 DEMERIT POINTS</p>          |
| <p><b>Parallel Parking</b><br/>Must parallel park in direction of travel unless signpost states otherwise.</p>  | <p><b>PENALTY \$330</b><br/>+ 3 DEMERIT POINTS</p>          |
| <p><b>Double Parking</b><br/>Do not double park in a school zone.</p>   | <p><b>PENALTY \$330</b><br/>+ 3 DEMERIT POINTS</p>          |
| <p><b>Footpath and Nature Strip</b><br/>Do not stop on a footpath, nature strip or obstruct ramp or path access.</p>  | <p><b>PENALTY \$330</b><br/>+ 3 DEMERIT POINTS</p>          |

\*Fines current as of February 2018. Fines and demerit points are subject to change.

### Liverpool Campus

55 Speed St

Liverpool NSW 2170

P +61298228022

F +61298228011

### Bankstown Campus

2 Winspear Avenue

Bankstown NSW 2200

P +61297081220

F +61297829134

facebook.com/AlAmanah.College

@AlAmanahCollege or @AlAmanahCollege

admin@alamanah.nsw.edu.au

www.alamanah.nsw.edu.au